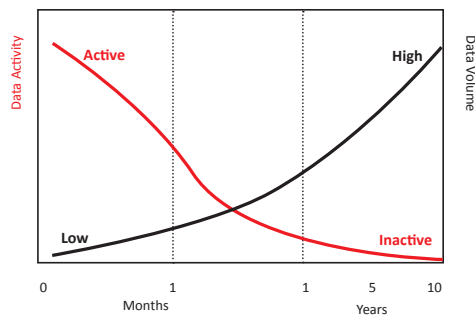


PoINT File System Analyzer is a software tool which is used to determine the amount of inactive data in a primary storage system. PoINT File System Analyzer is an easy to use tool and provides an intuitive user interface. The program

scans user specified file systems and provides dynamic analysis of the amount of data which is not accessed by users and applications for a specific time period.

ANALYZING FILE SYSTEMS

Typically as files grow older, access frequency decreases to a level which is almost negligible. This is illustrated in the following figure:



This results in a situation where expensive primary storage is not being used efficiently because the system capacity is overloaded with inactive files. This has additional negative impact on the backup and retrieval process.



PoINT File System Analyzer allows you to measure this level of inefficiency providing “real numbers” by analyzing a file system based on file attributes like “last access time” or “last modification time”.

After specification of the file system to be analyzed, the tool starts scanning. Using these scan results the parameter “Age of active data less than ..” can be dynamically modified to see how the relation between active and inactive data changes, without the need for additional file system scans.

Benefits

- Evaluates efficient usage of primary storage
- Identifies the potential for improvements
- Leads to more efficient storage concept (e.g. Storage Tiering)

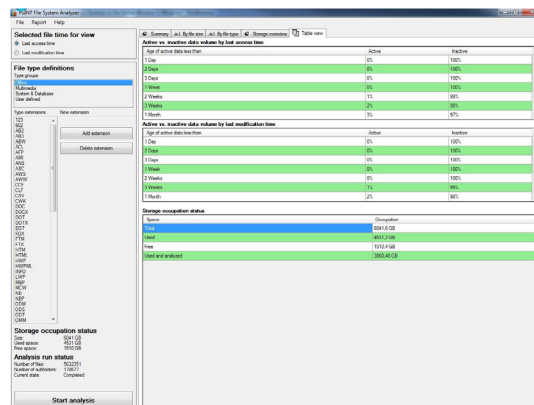
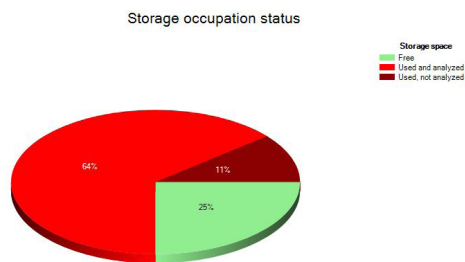
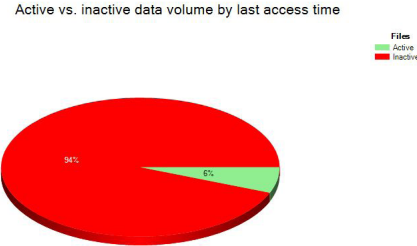
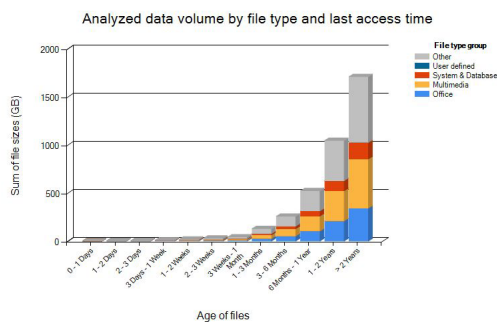
Features

- No program installation
- Fast scan of file systems
- Lean program footprint
- Analysis results in “real numbers”
- Parameter modification without restart/rescan
- Graphical view of results
- Export of results as HTML report

GRAPHIC VIEWS

The Program provides the results in a graphical view representing the amount of inactive in relation to active data. The tool presents the results of an analysis in five different views.

In addition to the summary view the following views are selectable:



Technical Information

System Requirements

- Windows Vista, Windows 7 or
- Windows 8
- Windows Server 2008 (R2) or
- Windows Server 2012

Partner Contact

DISC Benelux
 Lange Slagen 34
 4823 LJ Breda
 Nederland
 fon: +31 76 5414360
 email: bantenne@disc-nederland.nl
 http://www.disc-nederland.nl

